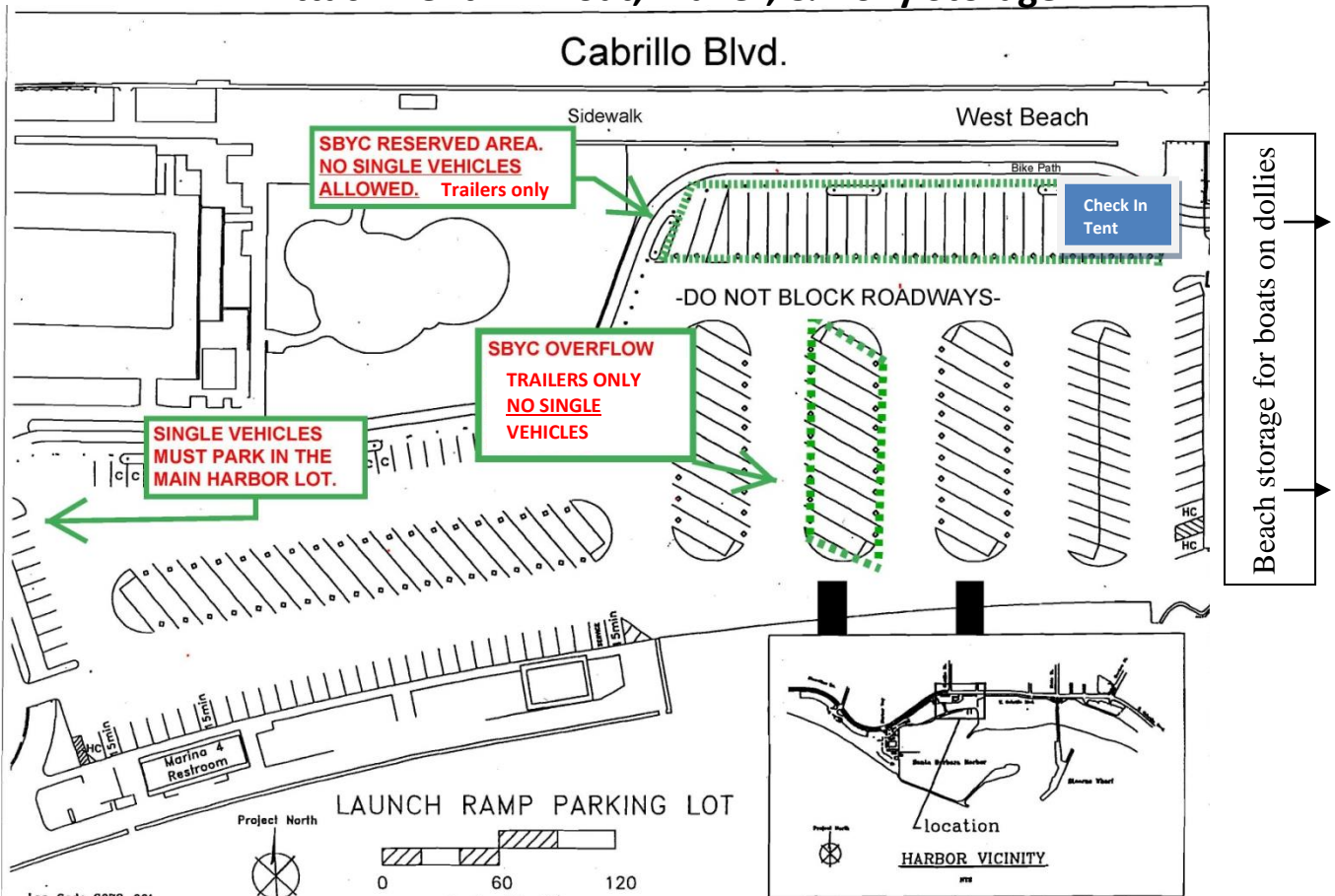
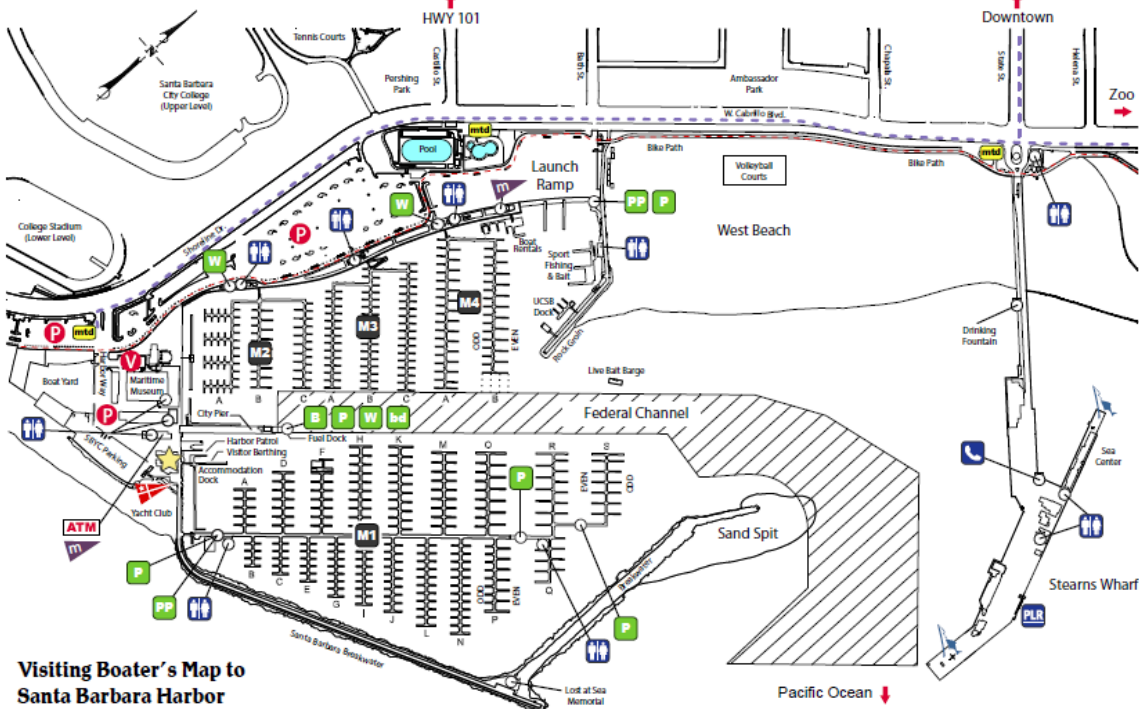


'Attachment A – Boat, Trailer, & Dolly Storage'



- Do not block roadways while coaching, rigging, loading, or unloading, etc. Rig only in designated areas.
- No single vehicles may be parked in the yellow trailer stalls. Trailers and cars with trailers only.
- Please launch from east most ramps only and return dollies to the rigging areas after launching.



Visiting Boater's Map to Santa Barbara Harbor

★ Harbormaster	M4 Marina Area	🚰 Fish Station	🚢 Yacht Club	⋯ Bike Path
P Parking	♿ ADA Restrooms	🚽 Porta Potty	🛒 Mini-mart	mta Bus Shuttle Stop
V Valet Parking	☎ Telephone	🚰 Pumpout	🔋 Battery Disposal	⋯ Bus Shuttle Route
ATM Automatic Teller	PLR Loading Ramp	🚰 Bilge Station	🚰 Waste Oil Station	🏊 Public Pool

City of Santa Barbara | Waterfront Department
 132-A Harbor Way, Santa Barbara CA 93109
 Harbormaster's Office: (805) 564-5530
 Map last updated: 04/21/2010

‘Attachment B – Santa Barbara Harbor Rules & Guidelines’

Welcome to Santa Barbara Harbor. This is a public facility that shares with other visitors, so please be courteous and respectful to other launch ramp and beach users. **Spectators, coaches, and participants must comply with all parking regulations and will be responsible for any parking fees.**

Boats & Dollies

- Trailers must be stored in designated spaces only as shown in ‘Attachment A – Boat, Trailer, & Dolly Storage’.
- If the designated space is filled, parking attendants may require participants to use other available lots in the area.
- No boats, dollies, trailers, groups of people, or cars may impede traffic in the launch ramp area for any reason. Please do briefing & debriefing sessions on the beach.
- All rigging and unrigging of boats must take place in the designated stalls.
- Boats and/or dollies may not be left at the launch ramp dock, except when actively launching or retrieving for the day. Dollies must be returned to the designated storage area after launching.

Parking

- Park cars only in designated single vehicle (white striped) parking stalls in the main harbor parking lot (see map).
- Do not park single vehicles in yellow stalls. These are reserved for trailers and for vehicles attached to trailers.
- Failure to comply with these policies may result in citations for vehicles.
- All parking fees are the responsibility of individual competitors.

Trailer Parking

- Trailers must be parked in designated trailer (yellow striped) parking stalls.
- Trailers may not be left in automobile parking stalls.
- Overflow trailer parking will be available if the trailer area is full. Please see the notice board at the Check-in tent for more information.

Camping

- There is no camping in the Santa Barbara Harbor Parking Lot. For a list of acceptable camp sites and lodging options, visit the event webpage.