



Santa Barbara Yacht Club presents:

29er



Santa Barbara Skiff Festival International 14 National Championship 505 Pacific Coast Championship 29er Hamlin Series #4

May 15th-17th, 2015

NOTICE OF RACE

The Organizing Authority for the 2015 Santa Barbara Skiff Festival will be:
The Santa Barbara Yacht Club (SBYC), 130 Harbor Way, Santa Barbara, CA 93109

1. RULES

- 1.1 The regatta will be governed by the rules as defined in *The Racing Rules of Sailing* (RRS).
- 1.2 US Sailing prescriptions to rules 60, 63.2, and 63.4 will not apply.
- 1.3 RRS 63.7 is replaced with: "If there is a conflict between a rule in the sailing instructions and one in the notice of race, the sailing instructions shall apply."
- 1.4 Appendix T, Alternate Procedures for Dispute Resolution; Sections A (penalties at the time of the incident), B (post race penalties), and D (arbitration) will apply.
- 1.5 Competitors shall wear personal flotation devices at all times except briefly between races to facilitate clothing changes. Code flag 'Y' need not be displayed. This changes Rule 40.
- 1.6 The Skiff Festival will be host to the 2015 International 14 Class National Championship, the 2015 505 Class Pacific Coast Championship, and the Southern California Youth Yacht Racing Association 29er Hamlin Series #4.

2. ELIGIBILITY and ENTRY

- 2.1 The regatta is open to all boats of the 29er, International 14 (I-14), and 505 classes.
- 2.2 Eligible boats may enter online at <http://sbycracing.org/2015-skiff-festival/>.

3. FEES

Class	Early Entry Fee (through 4/30/15)	Fee (after 4/30/15)
3.1 I-14	\$100	\$120
505	\$100	\$120
29er	\$20	\$30

- 3.2 Entry Fee includes two regatta shirts and a Beach Party Friday night for the 505 & I-14 sailors.
- 3.3 A late fee of \$20 for I-14's and 505's will be added to the entry fee after 4/30/15 @ 23:59:59.
- 3.4 A late fee of \$10 for 29er's will be added to the entry fee after 4/30/15 @ 23:59:59
- 3.5 Registration closes for all classes on 5/14/15 @ 23:59:59.

4. SCHEDULE

Time	Event	Location
Friday, May 15th (I-14 and 505 classes only)		
0930	I-14 & 505 check in	Harbor Launch Ramp
1045	Competitor Meeting	Harbor Launch Ramp
1300	First warning signal	
1730	Appetizers and no host bar	Santa Barbara Yacht Club

Saturday, May 16th (I-14, 505, and 29er classes)

0930	29er check in	Harbor Launch Ramp
1045	Competitor Meeting	Harbor Launch Ramp
1200	First warning signal for I-14	
1230	First warning signal for 29er	
1300	First warning signal for 505	

Sunday, May 18th (I-14, 505, and 29er classes)

1230	First warning for 29er	
1300	First warning signal for I-14 and 505	
1530	No Warning Signal after this time	
1630	Awards presentation at SBYC immediately following racing	

- 4.2 For the I-14 and 505 classes, a total of eight (8) races are scheduled with no more than three (3) races to be sailed on any one day.
- 4.3 For the 29er class, a total of twelve (12) races are scheduled with no more than six (6) to be sailed on any one day.

5. MEASUREMENTS

- 5.1 I-14 and 505 boats shall have been measured by a class measurement authority prior the event. A valid measurement certificate shall be presented upon request by any regatta or fleet representative. Additional measurement checks may be conducted during the regatta at the discretion of the Organizing Authorities.

6. SAILING INSTRUCTIONS

- 6.1 Sailing Instructions will be available on the event page at (<http://sbycracing.org/2015-skiff-festival/>) approximately one week prior to the event. Copies will also be available at registration.

7. VENUE & SAILING AREA

- 7.1 Registration and check in for all classes will take place at the Santa Barbara Harbor launch ramp located at the east end of the city waterfront parking lot as seen in 'Attachment A – Parking, Boat, Trailer, and Dolly Storage'.
- 7.2 Conditions permitting, it is the intention of the race committee to sail all classes on a course within two miles of the Santa Barbara harbor entrance.

8. THE COURSES

- 8.1 The courses to be sailed will be windward-leeward and triangle configurations. One race for the I-14 class will be a long distance race with several angles of sail.

9. PENALTY SYSTEM

- 9.1 The penalty system shall be as described in Appendix T, Sections A & B.

10. SCORING

- 10.1 The low-point scoring system of Appendix A will apply, except that when fewer than six races are completed, a boat's series score will be the total her race scores.
- 10.2 Two races must be completed to constitute a series.

11. COACH / SUPPORT BOATS

- 11.1 Coach boats may be stored on trailers overnight in the Santa Barbara public harbor lot and are subject to the lot fees. There will be limited overnight water dockage at the UCSB Sailing docks or

the SBYC End Tie 'D' (see Attachment A – Boat, Trailer, & Dolly Storage) available on a first come-first serve basis. Other arrangements for water storage may be made with the Harbor Department.

- 11.2 Coach boats must supply their own VHF radio for safety purposes and should not be left unattended at the dock space at the launch ramp or at the adjacent docks.

12. BERTHING - BOAT STORAGE AND DOLLIES

- 12.1 Competitors boats may only be stored in the launch ramp parking lot in designated areas during the event as seen in 'Attachment A – Boat, Trailer, & Dolly Storage'. **Each sailor must provide their own boat dolly or alternate means of boat storage.** Boats may only use the docks for immediate launching and retrieval.

13. PARKING

- 13.1 **Parents and participants must comply with all parking regulations and will be responsible for any parking fees.** Boats and trailers must be stored in designated spaces only as shown in 'Attachment A – Boat, Trailer, & Dolly Storage'. If the designated space is filled, parking attendants may require participants to use other available lots in the area. No boats, trailers, or cars may impede traffic in the launch ramp area for any reason. No boats or equipment may be stored on the beach overnight. Boats shall not be left at the launch ramp dock, except when actively launching or retrieving for the day. Failure to comply with these policies may result in citations for vehicles or in disciplinary action against competitors by the protest committee.

14. PRIZES

- 14.1 Take home trophies will be awarded to the top finishers in each class.

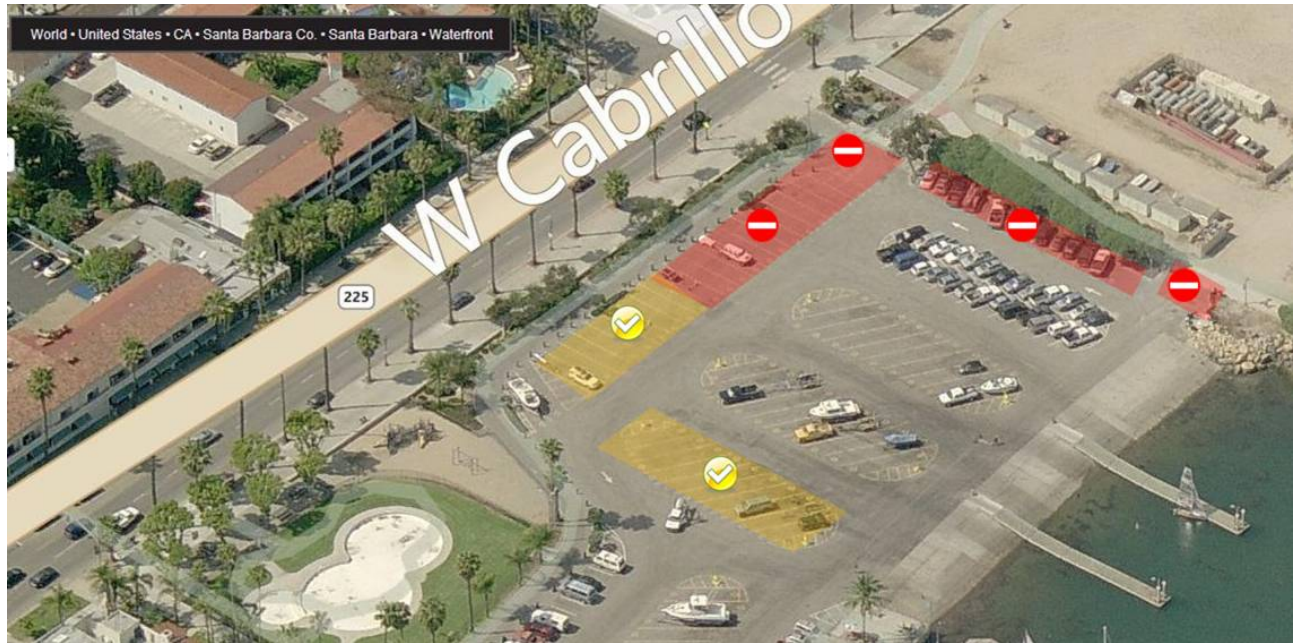
15. DISCLAIMER OF LIABILITY

- 15.1 Competitors participate in the regatta entirely at their own risk. See Rule 4, Decision to Race. The organizing authority will not accept any liability for material damage or personal injury or death sustained in conjunction with or prior to, during, or after the regatta.

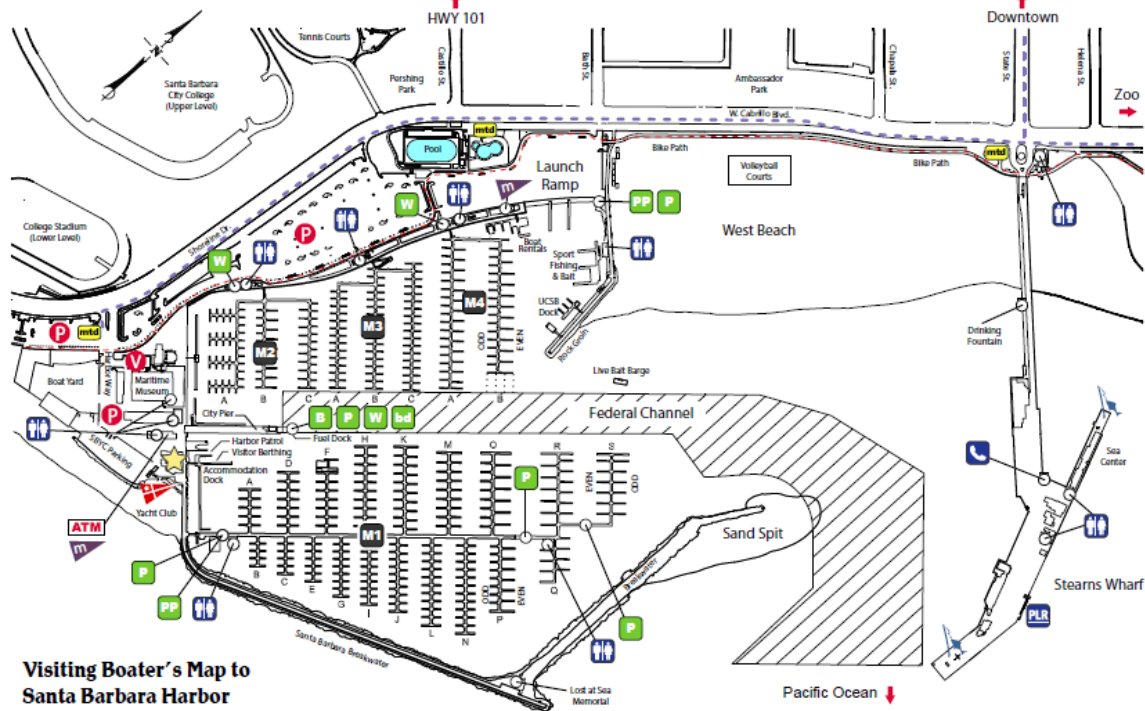
16. FURTHER INFORMATION

- 16.1 For further information please contact Shawn Hughes, SBYC Race Director at (805) 965-8112 x114 or racing@sbyc.org.

'Attachment A – Parking, Boat, Trailer, & Dolly Storage'



- Do not block roadways while coaching, rigging, loading, or unloading, etc. Rig only in designated areas.
- No single vehicles may be parked in the yellow trailer stalls. Trailers and cars with trailers only.
- Please launch from east most ramps only and return dollies to the rigging areas after launching.



Visiting Boater's Map to Santa Barbara Harbor

★ Harbormaster	M4 Marina Area	🚰 Fish Station	🚢 Yacht Club	--- Bike Path
P Parking	♿ ADA Restrooms	🚽 Porta Potty	🏪 Mini-mart	mta Bus Shuttle Stop
V Valet Parking	☎ Telephone	P Pumpout	🔋 Battery Disposal	- - - Bus Shuttle Route
ATM Automatic Teller	PLR Loading Ramp	B Bilge Station	W Waste Oil Station	🏊 Public Pool

City of Santa Barbara | Waterfront Department
 132-A Harbor Way, Santa Barbara CA 93109
 Harbormaster's Office: (805) 564-5530
 Map last updated: 04/21/2010