



*Santa Barbara Yacht Club*  
**Laser Pacific Coast Championship**  
June 27<sup>th</sup>-29<sup>th</sup>, 2014

## NOTICE OF RACE

The Organizing Authority for the 2014 Laser Pacific Coast Championship will be:  
The Santa Barbara Yacht Club (SBYC), 130 Harbor Way, Santa Barbara, CA 93109

### 1. RULES

- 1.1 The regatta will be governed by the rules as defined in *The Racing Rules of Sailing* (RRS).
- 1.2 The US Sailing prescriptions to rules 60, 63.2, and 63.4 will not apply.
- 1.3 Rule 40 is changed as follows: Competitors shall wear personal flotation devices, except briefly while changing or adjusting clothing or personal equipment (code flag Y need not be displayed).

### 2. ADVERTISING

- 2.1 Advertising shall be in accordance with ISAF Regulation 20, Advertising Code.

### 3. ELIGIBILITY and ENTRY

- 3.1 The regatta is open to all boats of the Laser class including Standard, Radial, and 4.7's rigs.
- 3.2 All entrants must be current members of the International Laser Class Association (ILCA) North America or their equivalent national Laser Class Association. Non-members can join the class by completing registration online at [www.laser.org](http://www.laser.org).
- 3.3 Eligible competitors may enter by completing the online entry form and paying applicable fees by June 23, 2014 at 1700. A link to online entry through Regatta Network may be found online at <http://sbycracing.org/2014-laser-pacific-coast-championship/>. Exceptions are at the discretion of the Race Committee.
- 3.4 Competitors will be required to agree to a waiver of liability as a condition of eligibility. This waiver may be completed during online registration.

### 4. CLASSIFICATION

- 4.1 This event is open to all sailors of all classifications as described in ISAF Regulation 22, Sailor Classification Code.

### 5. FEES

- 5.1 There will be a \$125 entry fee per boat that must be paid online during the registration process. Entries received after Monday, June 2, 2014 will be considered late and a \$25 late fee will be added to the entry fee.
- 5.2 Entry fees include a t-shirt, post-racing refreshments, Saturday barbecue dinner, and admission to all scheduled social events.

### 6. SCHEDULE

#### *Thursday, Jun 26<sup>th</sup>*

<u>Time</u>	<u>Event</u>	<u>Location</u>
1400-1800	Check-in & Measurement	SB Harbor Launch Ramp

#### *Friday, June 27<sup>th</sup>*

<u>Time</u>	<u>Event</u>	<u>Location</u>
900-1115	Check-in & Measurement	SB Harbor Launch Ramp
1130	Competitor Meeting	SB Harbor Launch Ramp
1300	First Warning Signal	
After Racing	Post racing snacks	SB Harbor Launch Ramp

**Saturday, June 28<sup>th</sup>**

<b>Time</b>	<b>Event</b>	<b>Location</b>
1300	First Warning Signal	
1800	Regatta Barbeque Dinner	Santa Barbara Yacht Club

**Sunday, June 29<sup>th</sup>**

<b>Time</b>	<b>Event</b>	<b>Location</b>
1300	First Warning Signal	
1530	No Warning Signal after this time	
1700	Awards Ceremony	Santa Barbara Yacht Club

**7. MEASUREMENTS**

- 7.1 All boats shall comply with current ILCA Class Rules and Specifications. Spot checks may be performed on any boat by the race committee or judges at any time during the event.
- 7.2 Competitors must present their sails at check-in for inspection of sail numbers and sail buttons to ensure compliance with class rules. Sail numbers must be applied in accordance with ILCA class rules (refer to [www.laserinternational.org](http://www.laserinternational.org) for detailed instructions).

**8. SAILING INSTRUCTIONS**

- 8.1 Sailing Instructions will be available at event check-in and on the event page at (<http://sbycracing.org/2014-laser-pacific-coast-championship/>) approximately one week prior to the event.

**9. VENUE**

- 9.1 Check-in and measurement for all classes will take place at the Santa Barbara Harbor launch ramp located at the east end of the Santa Barbara city waterfront parking lot as shown in 'Attachment A'. All post-sailing activities will take place at the Santa Barbara Yacht Club. All classes will sail on a course within 2 miles of the Santa Barbara harbor entrance.

**10. THE COURSES**

- 10.1 The courses will be around buoys set by the race committee as described in the sailing instructions.

**11. PENALTY SYSTEM**

- 11.1 The penalty system will be as described in rule 44.1

**12. SCORING**

- 12.1 The low-point scoring system of Appendix A will apply, except that:
- (i.) When fewer than six (6) races have been completed, a boat's series score will be the sum of her race scores.
- (ii.) When six (6) or more races have been completed, a boat's series score will be the sum of her races scores excluding her worst score.
- 12.2 Three races must be completed to constitute a series.

**13. SUPPORT BOATS**

- 13.1 Support and coach boats must register at the check-in tent during the check-in period.
- 13.2 Support and coach boats shall supply their own VHF radio and monitor the race committee VHF channel for safety purposes.
- 13.3 Support and coach boats shall remain more than 50 yards from the course area, except when asked to assist by the race committee.
- 13.4 Support and coach boats may be stored on trailers overnight in the Santa Barbara public harbor lot and are subject to the lot fees. There may be limited overnight water dockage at the UCSB Sailing docks and at the SBYC end-tie available on a first come-first serve basis. Other arrangements for

water storage should be made with the Harbor Department. Support/coach boats should not be left unattended at the dock space at the launch ramp or at the adjacent docks.

**14. BERTHING - BOAT STORAGE AND DOLLIES**

- 14.1 Competitors boats & dollies may only be stored on the beach adjacent to the launch ramp parking lot in designated areas during the event. Boat trailers may only be stored in designated zones at the harbor launch parking area as seen in 'Attachment A – Boat, Trailer, & Dolly Storage', unless otherwise told by the race committee. Trailers may not be accessible for overnight storage. **Each sailor must provide their own boat dolly or alternate means of boat storage.** Boats may only use the docks for immediate launching and retrieval.

**15. PRIZES**

- 15.1 Take home trophies will be awarded to the top finishers in each class.  
15.2 The number of prizes may be adjusted to suit the number of competitors pre-registered in each fleet. Additional prizes may be awarded at the discretion of the organizing authority.

**16. DISCLAIMER OF LIABILITY**

- 16.1 Competitors participate in the regatta entirely at their own risk. See rule 4, Decision to Race. The organizing authority will not accept any liability for material damage or personal injury or death sustained in conjunction with or prior to, during, or after the regatta.  
16.2 Competitors will accept full responsibility for all their actions during any activity related to this event. This includes on-shore activities before, during, and after the regatta.  
16.3 Competitors are expected to abide by the Santa Barbara Harbor Rules as stated in 'Attachment B'.

**17. RIGHT TO USE NAME & LIKENESS**

- 17.1 By participating in this event, all competitors automatically grant the organizers and sponsors the right to make, use, and show, at any time and at their discretion, any photographs or videos of him or her produced during the period of the event without compensation.

**18. FURTHER INFORMATION**

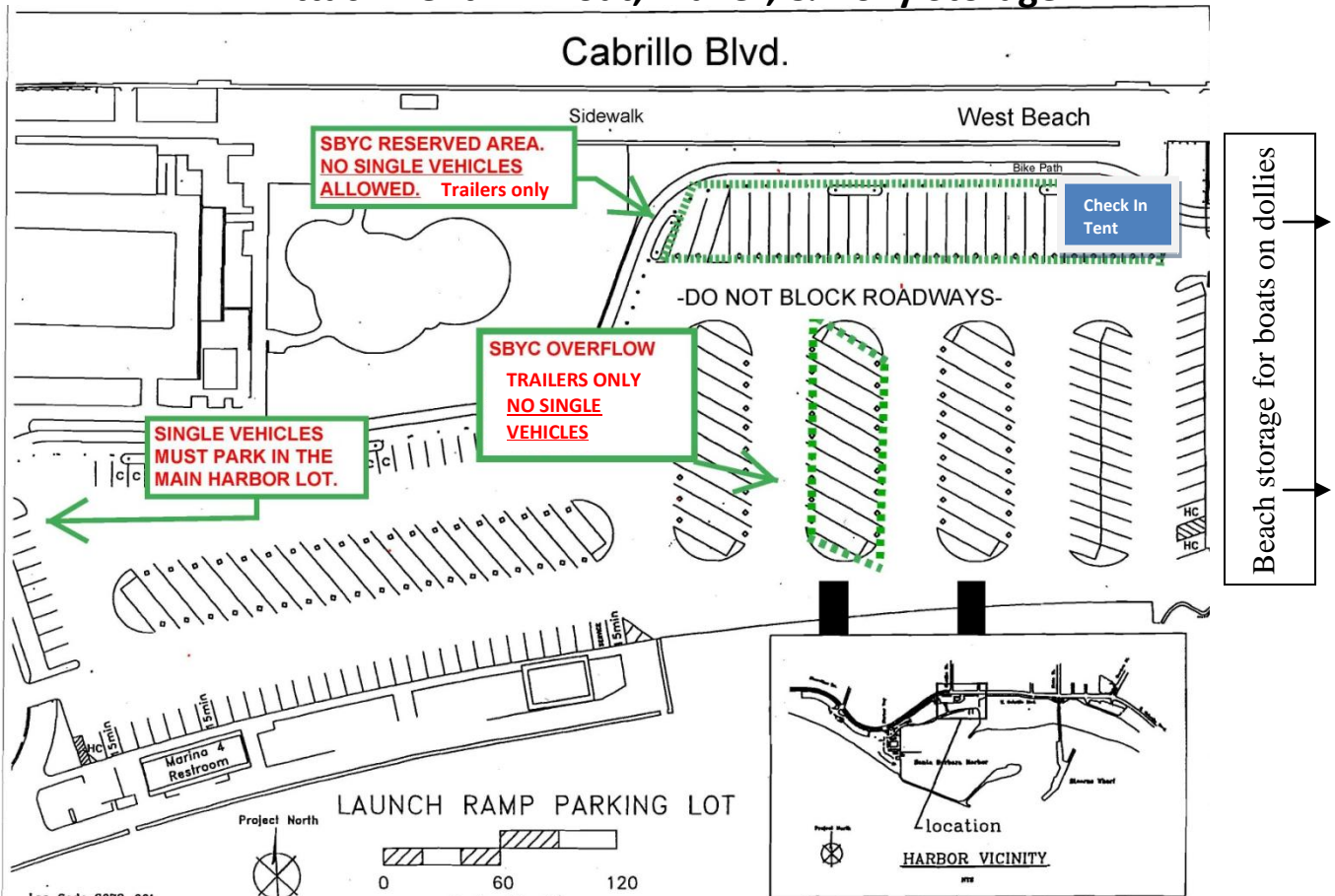
- 18.1 For further information including hotels and camping in the Santa Barbara area, please visit the event webpage at <http://sbycracing.org/2014-laser-pacific-coast-championship/>.

**CONTACTS**

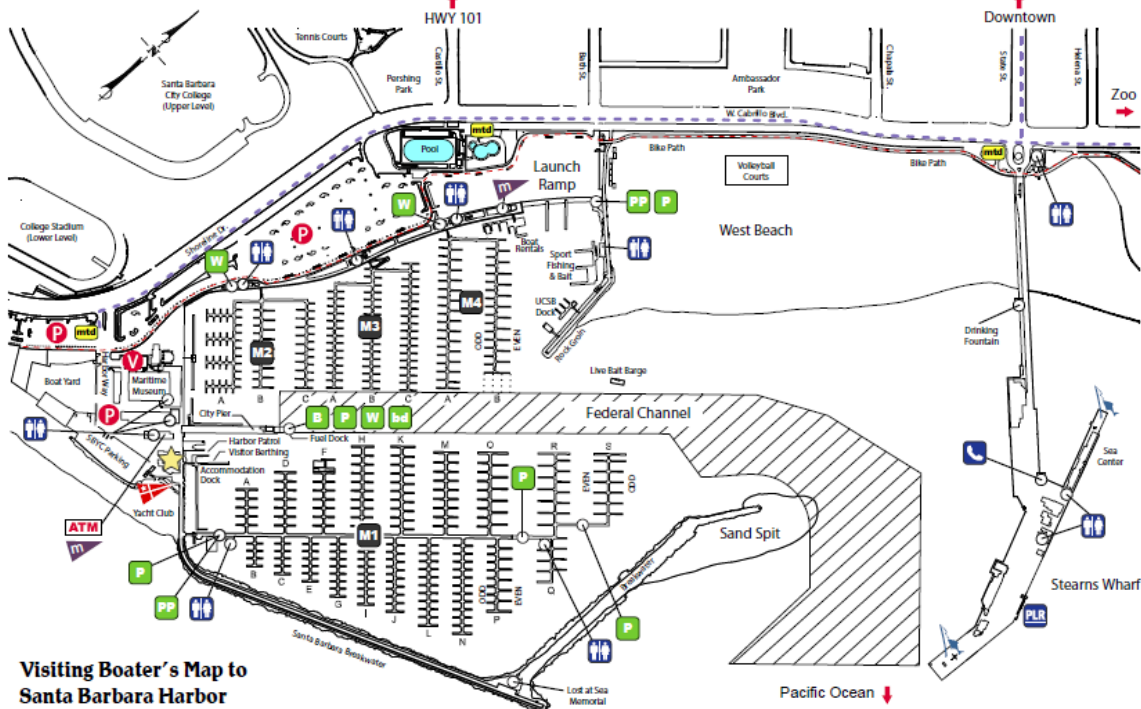
*Regatta Chair:* John Long - [jlonginsb@yahoo.com](mailto:jlonginsb@yahoo.com)

*SBYC Race Director:* Brad Schaupter - (805) 965-8112 x14 or [racing@sbyc.org](mailto:racing@sbyc.org).

# 'Attachment A – Boat, Trailer, & Dolly Storage'



- Do not block roadways while coaching, rigging, loading, or unloading, etc. Rig only in designated areas.
- No single vehicles may be parked in the yellow trailer stalls. Trailers and cars with trailers only.
- Please launch from east most ramps only and return dollies to the rigging areas after launching.



Visiting Boater's Map to Santa Barbara Harbor

★ Harbormaster	M4 Marina Area	🚰 Fish Station	🚤 Yacht Club	⋯ Bike Path
P Parking	♿ ADA Restrooms	🚻 Porta Potty	🛒 Mini-mart	mtd Bus Shuttle Stop
V Valet Parking	☎ Telephone	P Pumpout	🔋 Battery Disposal	⋯ Bus Shuttle Route
ATM Automatic Teller	PLR Loading Ramp	B Bilge Station	W Waste Oil Station	🏊 Public Pool

City of Santa Barbara | Waterfront Department  
 132-A Harbor Way, Santa Barbara CA 93109  
 Harbormaster's Office: (805) 564-5530  
 Map last updated: 04/21/2010

## **'Attachment B – Santa Barbara Harbor Rules & Guidelines'**

Welcome to Santa Barbara Harbor. This is a public facility that shares with other visitors, so please be courteous and respectful to other launch ramp and beach users. **Spectators, coaches, and participants must comply with all parking regulations and will be responsible for any parking fees.**

### **Boats & Dollies**

- Trailers must be stored in designated spaces only as shown in 'Attachment A – Boat, Trailer, & Dolly Storage'.
- If the designated space is filled, parking attendants may require participants to use other available lots in the area.
- No boats, dollies, trailers, groups of people, or cars may impede traffic in the launch ramp area for any reason. Please do briefing & debriefing sessions on the beach.
- All rigging and unrigging of boats must take place in the designated stalls.
- Boats and/or dollies may not be left at the launch ramp dock, except when actively launching or retrieving for the day. Dollies must be returned to the designated storage area after launching.

### **Parking**

- Park cars only in designated single vehicle (white striped) parking stalls in the main harbor parking lot (see map).
- Do not park single vehicles in yellow stalls. These are reserved for trailers and for vehicles attached to trailers.
- Failure to comply with these policies may result in citations for vehicles.
- All parking fees are the responsibility of individual competitors.

### **Trailer Parking**

- Trailers must be parked in designated trailer (yellow striped) parking stalls.
- Trailers may not be left in automobile parking stalls.
- Overflow trailer parking will be available if the trailer area is full. Please see the notice board at the Check-in tent for more information.

### **Camping**

- There is no camping in the Santa Barbara Harbor Parking Lot. For a list of acceptable camp sites and lodging options, visit the event webpage.